

¿JAS LE KOMON CHOMAB'ÄL RECH CHAJI-NEM K'ASLEMAL?



Are kuk'utu ub'eyal uchak le Wokom Patanelab' rech kuk'utu qas le utz taq chak kb'anik rech kto'ik le chajinem k'aslemal.



K'UTB'AL TAQANIK

Taqana Wuj rech Amaq Paxil Kayala

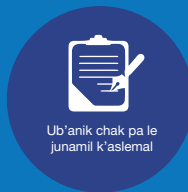
Taqanik rech le nukb'al Amaq che Chajinem K'aslemal

E'nik'aj chik Taqanik pa uwach ulew

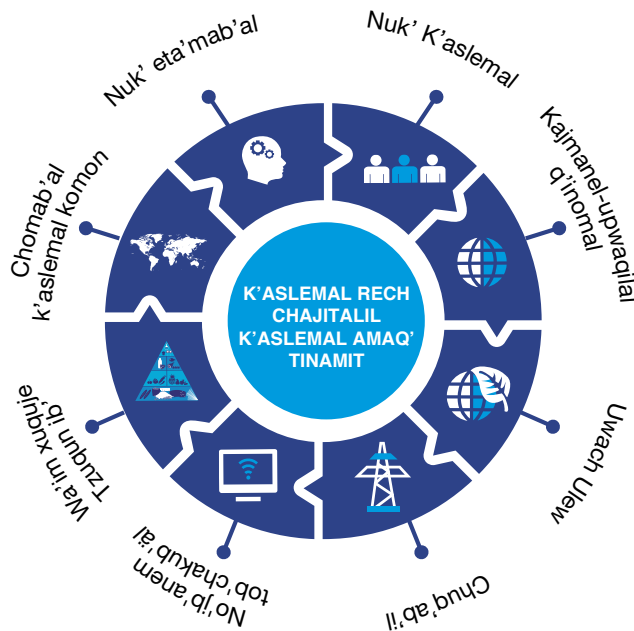
Taqanik rech K'utb'al Junamil rech Centroamerica

Taqanik rech le Descentralización xuquje le Consejos rech Desarrollo Urbano y Rural

UK'UXAL K'ASLEMAL K'UTUW B'E'AL



RILIK UMULUXIK UB'E'AL K'ASLEMAL KOMON



TAK'AB'ALIL UB'E'AL CHAK

- ▶ Usuk'b'axik le ub'e'al kichak wokajil ruk' le Karaj kuriqa le Komon Chomab'al rech Chajinem K'aslemal.
- ▶ Umajik ub'anik, k'irisanik, ruk' tob'anik, nuk'unem tzij, le komon chak.
- ▶ Uworsaxik jun utzalaj chak kkib'an ajchajinel tinimit.
- ▶ Umajik uya'ik uchuq'ab' le k'ulam ub'anik chak chikixo'l le wokajil rech junam kb'an chak rech chajinem pa kiwi' le uq'ab'taq tinimit.
- ▶ Uworsaxik le tzijonem rech junam kk'am ub'e'al chak kuk' taq le ya'tal chike le winaq kepe pa junchik tinimit xuquje la ajwaral chajinel.
- ▶ K'irisanik jun Wokaj tijonem pa le Nim Tinimit rech Eta'mab'al, Nik'oxik, ilonel chak tzijonem, Tzukunftem pa kematz'ib', xuquje nojib'al.

TAK'AB'ALIL UB'E'AL CHAK

- ▶ Uworsaxik le Juwok Choltaqanem rech Tijonem.
- ▶ Kya'ik uq'ij uk'iysaxik le suk'ub'e'al utz taq chak kech wokajil, rech kisik'ixik, kisilib'ik le Ajchajinel Tinimit.
- ▶ K'irisanik ub'e'al chikixol wokajil rech ucholajik le sutaq rajawaxik uchajixik tinamit pa le chomanik yikwinaqil.
- ▶ Uworsaxik le junam chomanik chikixo'l wokajil kechakun puwi le chajinem xuquje le K'iyem.
- ▶ Uworsaxik k'amow ib' kuk' enik'aj wokaj winaqil, nimaq taq tijob'al, wokaj tzukunftem eta'amanik, juwok k'ayib'al q'inomal xuquje enik'aj chik.
- ▶ K'irisanik ub'e'al utzalaj chak rech chajixik pa le k'aslemal pa le kaj ruk' kematz'ib'

K'UTUNEM RECH CHAJINEM K'ASLEMAL AMAQ'

